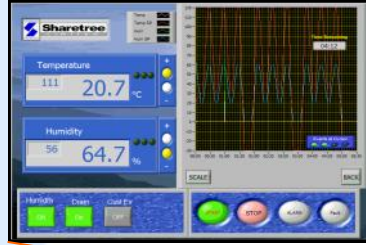


# Typhoon-ACUs

## Typhoon Air Conditioning Units (ACUs)



Typhoon ACU (fitted with SIMPLEtouch programmer )

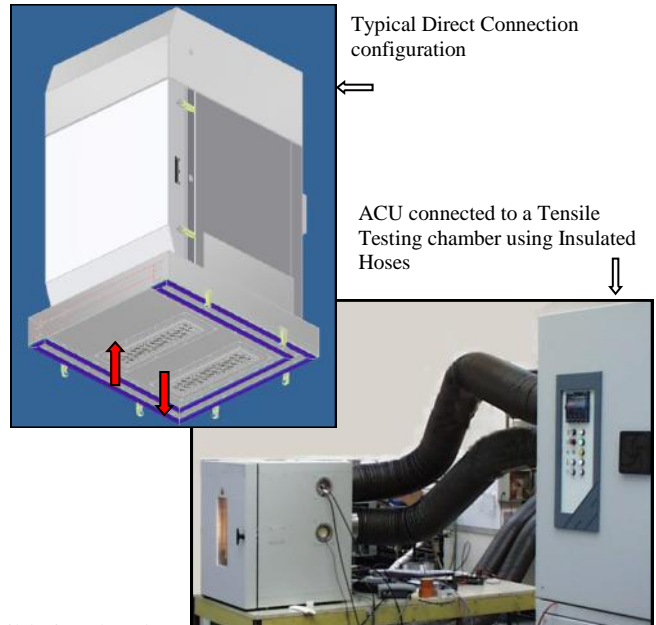
- **Powerful thermal control of custom enclosures**
- **Wide temperature range (+250 to -60°C)**
- **Humidity options**
- **SIMPLEtouch programmer**
- **2-stage temperature sensing**
- **Flexible, insulated hoses**
- **Direct Connection option**
- **Integral plant**

## Typhoon Air Conditioning Units

Sharetree Typhoon Air Conditioning Units (ACUs) are specifically designed for re-circulating conditioned air through a variety of custom built product enclosures, or directly to products. ACUs are used where a standard test chamber cannot easily be fitted around the product. Custom designed product enclosures can also be supplied if required.

These versatile ACUs feature wide temperature and humidity control options, with 2-stage temperature sensing for accurate control.

The systems are fitted with our **SIMPLEtouch** touch-screen programmer to simplify the operator interface and enable complex profiles to be programmed, data logged, and displayed graphically (see brochure)



### Interface options

The standard interface to the custom enclosure is by means of flexible insulated hoses. An alternative Direct Connection arrangement is possible with some enclosures (see above). The inlet and outlet vents are ported from the ACU directly into the custom enclosure to give the maximum possible airflow and even better control.

MODEL RANGE	Units	Order Codes	Basic models			
			T/ACU/-30	T/ACU/-60	TH/ACU/-30	TH/ACU/-60
Temperature (max)	°C		170	170	170	170
Temperature (min)	°C		-30	-60	-30	-70
Humidity (20-90°C)	%RH		-	-	10-95	10-95
Airflow rate <sup>2</sup>	Litres/min		25,000	25,000	25,000	25,000
Heating rate <sup>1</sup>	°C/min		5	5	5	5
Cooling rate (average) <sup>1</sup>	°C/min		5	5	5	5
Load mass (max)	Kg		30	30	30	30
Plant type			Single-stage	Cascade	Single-stage	Cascade
Mains supply			400v/50Hz			
External size	mm		1980h x 1610w x 1310d			
<b>Options:</b>	<sup>1</sup> Measured in accordance with BS EN 60068. <sup>2</sup> Closed-loop configuration (custom enclosure and product load may reduce these figures)					
Insulated hoses (pair)	150 id x 3000 mm	IH150	•	•	•	•
Hose adaptors (pair)	150 id mm	HA150	•	•	•	•
Direct Connection		DC	•	•	•	•
High temperature (250°C)		HT	•	•	•	•
LN2 Boost cooling (Indirect, 10°C/min)		LN	•	•	•	•
Product protection		PP	•	•	•	•
<b>SIMPLEtouch</b> programmer		STP	inc	inc	inc	inc

Agent:



Sharetree Limited  
 Units D&E Stonedale Road  
 Oldends Industrial Estate  
 Stonehouse, GL10 3SA  
 England  
 Tel: +44 (0) 1453 828 642  
 Fax: +44 (0) 1453 828 076  
 Email: sales@sharetree.co.uk  
 Web site: www.sharetree.com



*Specifications may vary as part of our policy of continuing product improvement*